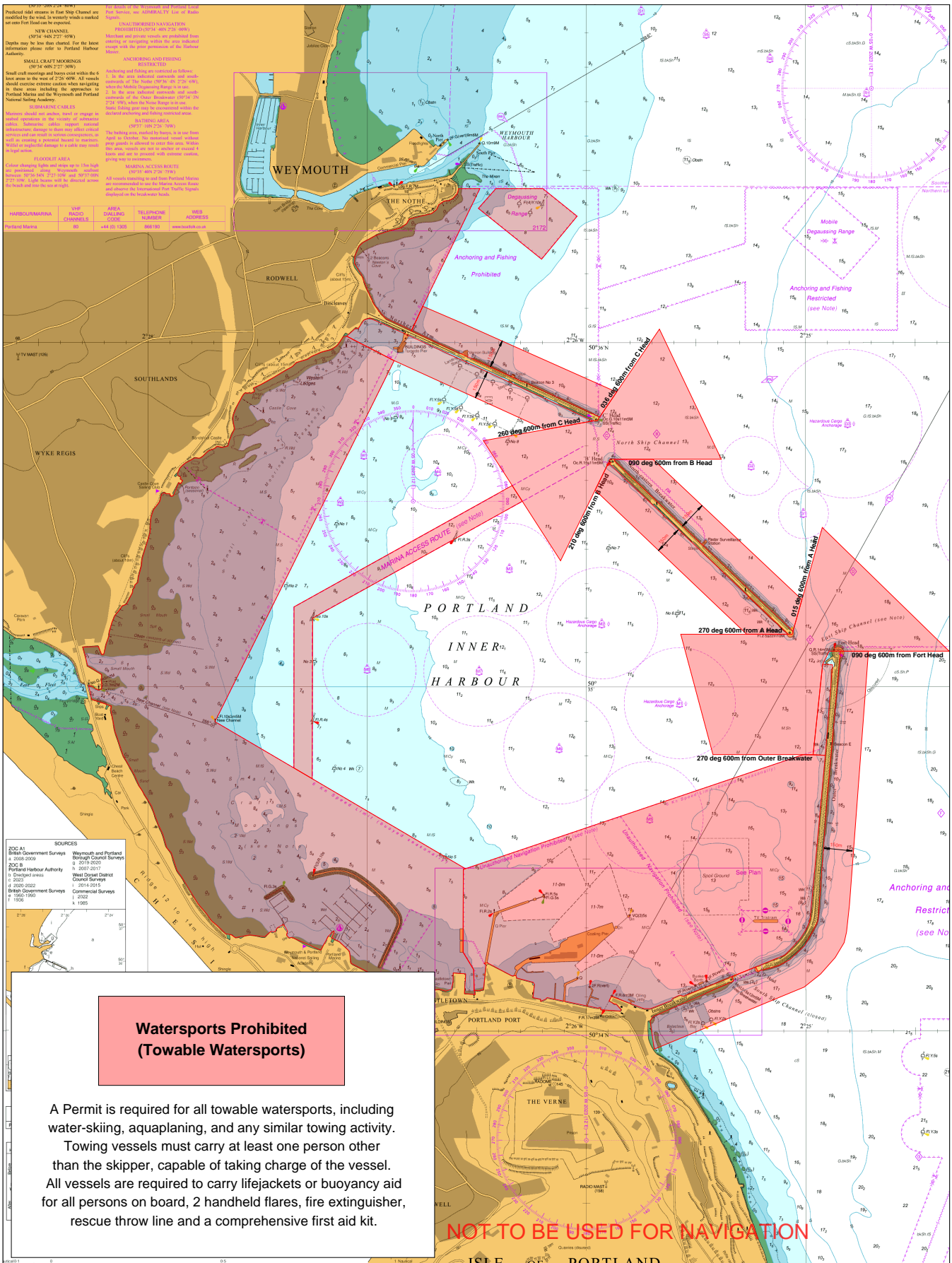


Portland Harbour Towable Watersports Restrictions



Watersports Prohibited (Towable Watersports)

A Permit is required for all towable watersports, including water-skiing, aquaplaning, and any similar towing activity. Towing vessels must carry at least one person other than the skipper, capable of taking charge of the vessel. All vessels are required to carry lifejackets or buoyancy aid for all persons on board, 2 handheld flares, fire extinguisher, rescue throw line and a comprehensive first aid kit.

© Crown Copyright and/or database rights. Reproduced by permission of the Controller of Her Majesty's Stationery Office and the UK Hydrographic Office (www.GOV.uk/UKHO).

Portland Harbour Revision Order 1997 Schedule 1, Paragraph 47.

This document is produced as a guide, please refer to Portland Harbour Revision Order 1997 for accurate positioning information.

Version 4 September 2023